

EASY TO INSTALL



During the concreting process an anti rotation lock keeps the ANCHOR - dowel in the right position. The manhole step can be inserted into the dowels easily.

SAFETY



The pull-out force exceeds the requirements of the EN13101 by far. Once locked, the manhole step is permanently secured and cannot be dismantled non-destructive.

DURABLE

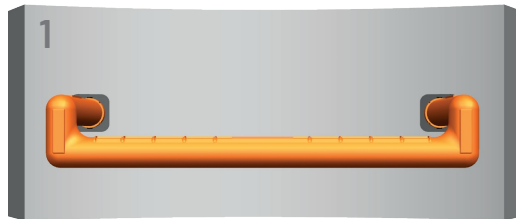


If the step is damaged, it can be easily replaced. The tread surface of the step has to be cut vertically. To remove the two parts subsequently, just turn them by 90° and pull them out. Since the dowels remain completely intact, a new step can be inserted immediately afterwards.

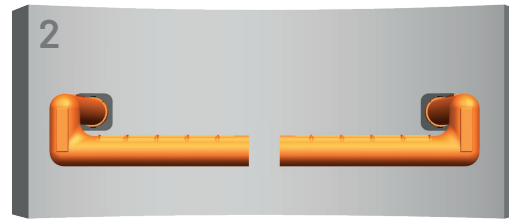


ecoStep ANCHOR always one step ahead

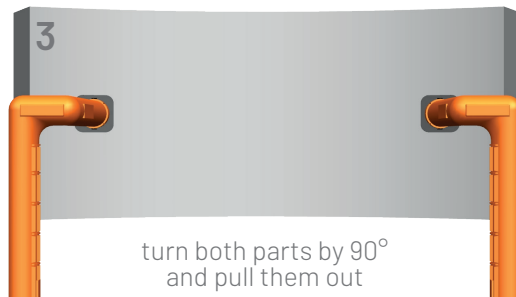
ecOSTEP



manhole step to be replaced



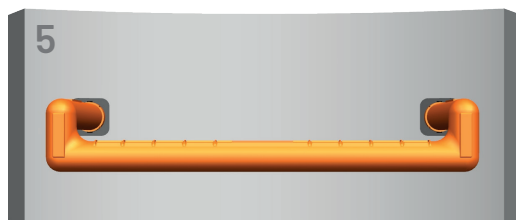
manhole step has to be cut vertically



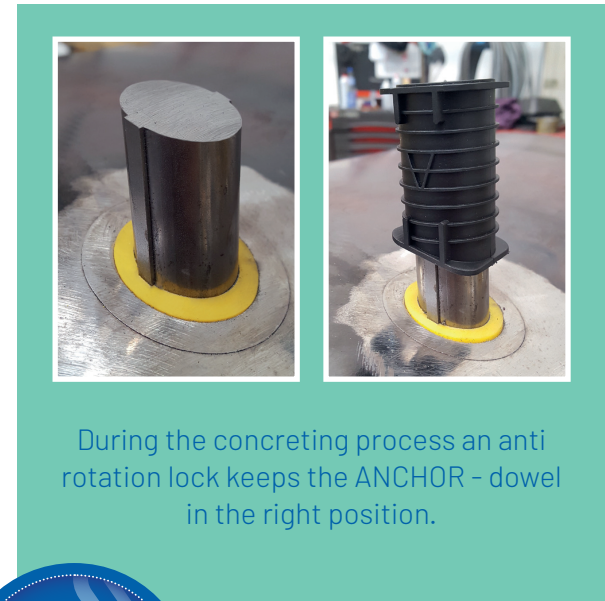
turn both parts by 90°
and pull them out



the ANCHOR - dowels remain intact



a new manhole step can be inserted



During the concreting process an anti rotation lock keeps the ANCHOR - dowel in the right position.



Our **ecoStep** ANCHOR - system is available for a big variety of manhole steps.