

DATASHEET

ECOSTEP STEP RUNGS

FP 301-R

ecostep

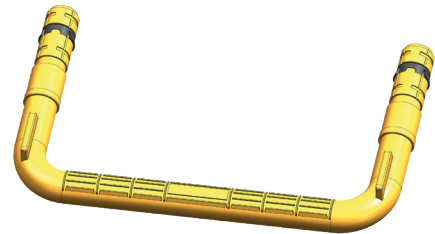
Art.-Nr.: 112906

Core Material	Solid Steel 14 mm (MSS)
Type, Class	C, II
Color	Yellow
Dowel Distance	300 mm
Leg Length	193 mm

Weight	0,986 kg
Coating	Plastic (PP)
Packaging	600 pieces/crate
Applicable Standard	EN13101

PRODUCT ADVANTAGES

- completely covered with plastic for total corrosion protection
- superior pull-out resistance, in excess of recommended safety standards
- spark proof
- plastic has increased impact strength
- no sharp edges
- non-slip surface



INSTALLATION

Dowels set in concrete:

- Dowels are imbedded in the concrete shaft structure at the right distance using hydraulic or magnetic dowel holders in the core of the manhole. Steps are then hammered in.

Please consider the following when hammering-in the manhole steps:

Alternate hits at leg height on the left and right front surfaces with a dead-blow rubber mallet.

