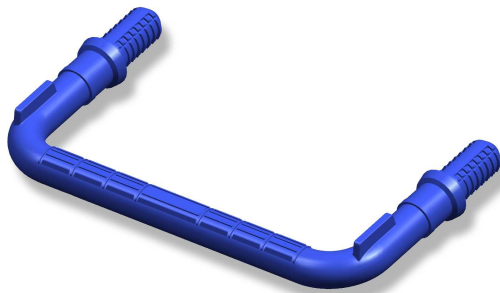


Type:	FP333
Item No.:	104037
Core Material:	Steel pipe
Color:	Blue
Dowel Distance:	330 mm
Leg Length:	192 mm
Packaging:	600 pieces/crate
Weight:	0,60 kg
Applicable Standard:	EN13101



Product Advantages:

- completely covered with plastic for total corrosion protection
- superior pullout resistance, in excess of recommended safety standards
- spark proof
- high impact polymer covering
- no sharp corners or edges
- anti-slip surface

Installation:

1) Retrofit of manholes:

- Drilled holes: use a masonry bit to drill a 28 mm hole. The holes should be kept parallel (330 mm distance) and 61 mm deep.
- Formed holes: use a 28 mm pipe to form holes in the "green" product. Drive the step home to full depth with alternate single hammer blows to each corner.

2) Automatic insert of steps:

- Direct vibrating: automatic insert of step rungs during manhole production.
- ecoStep anchors: automatic insert of anchors during manhole production.

